

“ We never hesitate at introducing Coolspirit to any customer looking for a Quantum product or solution regardless of whether it is a few dozen media or a complete backup system. Their focus on customer needs is second to none. ”

Ewan Johnson
Quantum Storage UK

Our address

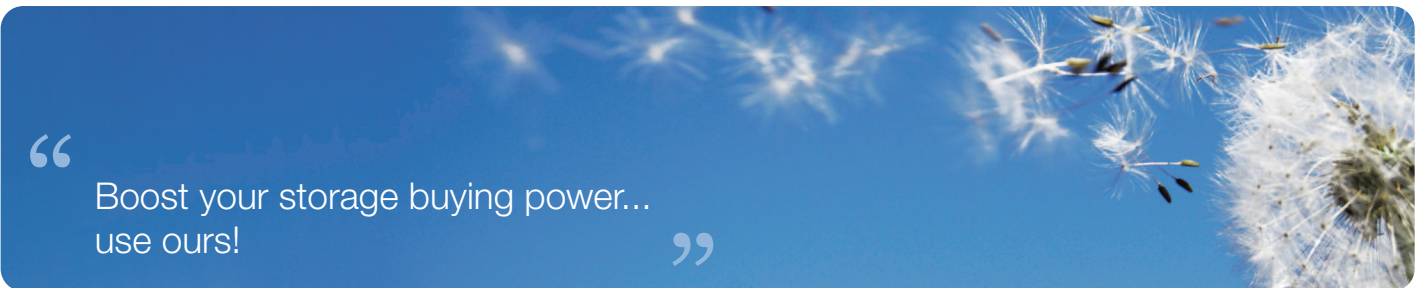
24 The Bridge Business Centre
Beresford Way
Chesterfield
S41 9FG

Get in touch

Call us on: 01246 454222
Email us: web@coolspirit.co.uk
Find us: [View location map](#)
Web: www.coolspirit.co.uk

Office hours

mon - thurs 8:30am - 5:30pm
fri 8:30am - 5pm
sat - sun Closed



“ Boost your storage buying power... use ours! ”

Buy with confidence from
Coolspirit your authorised
Quantum Partner

Quantum. ALLIANCE
Platinum Partner

Scalar i40/i80

Media Integrity and Drive Utilization Reporting



The Scalar® i40/i80 are the first entry-level tape libraries in the industry to create a database that contains a full history of the activities associated with all of their drives and media. For each drive, a complete usage history is retained, including all load, unload, write, and read records. The Scalar i40/i80 also retain a full history of all alert events for every piece of media known to the library, even pieces of media currently in off-site storage. The database is designed to store years of data, enough to provide both event diagnostics and long-term trend analysis throughout the life of the library. The Scalar i40/i80 Media Integrity Analysis and Drive Utilization reports give users a flexible, easy-to-use interface to create reports from this database. Media Integrity Analysis reports let users cross-index historical drive and media alert events to proactively identify media that should be replaced before it impacts backup. The Drive Utilization reporting lets users quickly and easily determine if drive resources are being fully utilized and if reallocating jobs or adding drives would decrease the backup window.

TRACKS MEDIA INTEGRITY

CROSS-INDEXES DRIVES AND MEDIA ALERTS

PROTECTS ENTIRE MEDIA POOL

PRESENTS DRIVE USAGE HISTORY

FEATURES AND BENEFITS

- Embedded trend reports provide easy, automated analysis for media and drives
- Up to 34,000 media and drive-related events retained
- Media trend data includes tapes in off-site storage
- Query function shows history of every tape and drive for any period
- Drive load reports find under-utilized drives and indicate when reallocation or additional drives are needed

Quantum Scalar i40 User selectable time intervals

Setup Operations Tools Reports
Reports - Media Integrity Analysis
Configure the Media Integrity Analysis report.

Date Range: Last 7 Days Last 4 Weeks Last 3 Months All History

AmBites: Cartridge Barcode Drive Physical SN TapeAlert

Chart: Area Bar Line Pie

Type: Rollup Trend

Quantum Scalar i80

Setup Operations Tools Reports
Media Integrity Reports - Bar Chart Viewer
Cartridge Barcode/Drive Physical SN/TapeAlert for the All Historical Data.

Date/Time	Serial	Barcode	TapeAlert	TapeAlert Description
07/12/2008 17:24:54	0110193665	n/a	01	Hardware ID
07/12/2008 14:57:36	0210049849	000037L3	12	Unsupported format
07/12/2008 14:57:54	0210049849	000037L3	21	Cleaning requested
07/12/2008 14:57:56	0210049849	000037L3	01	Tape directory media at unload
07/12/2008 15:01:08	0210049849	000037L3	12	Unsupported format
07/12/2008 15:23:14	0310000088	000037L3	10	Tape directory completed on load

Alerts cross-indexed to drive history

Media list with alert event history

The Scalar i40/i80's Media Integrity Analysis reports give administrators an easy way to use trend data to evaluate and protect their media pool. The reports include the ability to query the history of every piece of media that has been in the library, including the ID of all drives it has been loaded in.

IMPROVE YOUR BACKUP ROI

Backup software and tape libraries have not been able to adequately evaluate the condition of removable media. And conventional libraries or backup applications do not have the ability to track and analyze drive usage patterns.

The Scalar i40/i80's data gathering and trend analysis tools, however, let users substantially improve the overall effectiveness of their backup system and maximize their return on investment.

Media Integrity Analysis reports let users cross-index drive and media error rates to proactively pinpoint issues within the media pool so that pieces of media are removed only when necessary. Managing the media pool more effectively reduces media failures and saves users time and money.

Drive Utilization reports provide a snapshot of drive usage patterns over a specific period of time, helping users equalize wear, locate underutilized drives, and identify partitions or libraries that need additional drives. Distributing loads more equally among drives optimizes performance and prolongs their life, maximizing long term drive investment and reducing costly downtime.

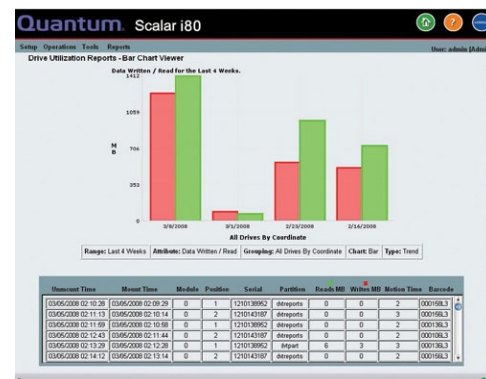
As part of Quantum's iLayer intelligent, management-based approach, Media Integrity Analysis and Drive Utilization reports leverage the library's historical database of media and drive events to give users the information they need to more efficiently manage their backup processes. Reports are available through the library interface and can be exported in standard formats including spreadsheets or other analysis tools—letting users easily sort the information and identify the appropriate actions to make their backup more effective.

Media Analysis Protects Integrity

Media Integrity Analysis reports use ongoing trend data to evaluate and protect the integrity of the media pool, helping administrators improve overall backup reliability and reduce costs. These reports summarize and analyze alert events for all media known to the library—even media in off-site storage. Users can view specific classes of alert events, query drive history, and cross-index drive-media error data to identify media with unrecoverable errors, media that is nearing its end of life, or media that should be removed from the library.

Drive Utilization Reports Improve Reliability And Resource Allocation

Quantum's Drive Utilization reports make it easy for administrators to compare drive usage trend data over specified time periods and to identify use patterns for all drives in the library or in a partition. This information can be used to adjust loading to equalize wear, to find underutilized drives, and to discover libraries or partitions that need additional drives. More than just monitoring, the Drive Utilization reports are planning and forecasting tools that help administrators plan budgets and rationalize hardware acquisition.



This Drive Utilization report example provides a 4 week history of data written and read to two drives in a partition. This graph suggests that reallocating jobs to the under-utilized drive could help equalize wear or that moving this drive to another partition could be a better use of resources.



Preserving the World's Most Important Data. Yours.™

©2010 Quantum Corporation. All rights reserved. Quantum, the Quantum logo, and all other logos are registered trademarks of Quantum Corporation or of their respective owners.

About Quantum

Quantum Corp. (NYSE:QTM) is the leading global storage company specializing in backup, recovery and archive. Combining focused expertise, customer-driven innovation, and platform independence, Quantum provides a comprehensive range of disk, tape, media and software solutions supported by a world-class sales and service organization. This includes the DXi®-Series, the first disk backup solutions to extend the power of data deduplication and replication across the distributed enterprise. As a long-standing and trusted partner, the company works closely with a broad network of resellers, OEMs and other suppliers to meet customers' evolving data protection needs.