



“ For over a decade Coolspirit have been supplying the UK’s top organisations with storage products and solutions so be assured we will meet your requirements head on.

It’s all about getting things right first time, quickly and simply! ”

Damon Robertson
Coolspirit Ltd

Our address

24 The Bridge Business Centre
Beresford Way
Chesterfield
S41 9FG

Get in touch

Call us on: 01246 454222
Email us: web@coolspirit.co.uk
Find us: [View location map](#)
Web: www.coolspirit.co.uk

Office hours

mon - thurs 8:30am - 5:30pm
fri 8:30am - 5pm
sat - sun Closed

“ Boost your storage buying power...
use ours! ”

Buy with confidence from
Coolspirit your authorised
Overland Partner



How to Simplify Virtual Server Storage Management with SnapServer® SAN S2000

Why do you need it?

Virtualization is now a critical component within today's IT infrastructure.

- Will you have to learn an additional storage management tool?
- How complex is provisioning?
- What will it take to implement and manage important data protection features like mirroring and replication?

How we help...

The S2000's deep virtual server integration enables rapid provisioning of VMware Datastores and Hyper-V physical disk, removing the complexities of ongoing management and data protection. Now, everyone can enjoy the benefits of a SAN without having deep storage administration or Fibre Channel networking experience.

- ✓ Designed from the ground up for virtual workloads
- ✓ Utilizes the native MS and vCenter consoles for creation, management, and data protection tasks

Fully Integrated SnapServer SAN Wizards

Overland has done the heavy lifting for you to create a tightly integrated experience with both VMware and Microsoft Hyper-V, making the management of your S2000 SAN storage effortless. The SnapServer SAN wizard guides you through every aspect of creating and managing your storage. Say goodbye to multiple tools for provisioning and managing data protection features like mirroring.

VMware Specific Integration

- ✓ The SnapServer SAN vSphere Plugin creates a new tab within vCenter allowing administrators to manage their ESX environment natively from within the VMware vCenter Server. (Figure 1)
- ✓ Ability to effortlessly integrate the SnapServer SAN with VMware storage configuration within the native vSphere manager. (Figure 2)
- ✓ Active-Active Failover for ESX Datastores.
- ✓ Enables single interface configuration for S2000 targets, VMware Datastores and VMware High Availability options such as DRS, HA, Vmotion, and Fault Tolerance.

10.20.16.34 VMware ESX, 4.0.0, 208167				
	Vendor	Version	Status	Description
oring	VMware Inc.	4.0	Enabled	Storage Monitoring and Reporting
	VMware, Inc.	4.0	Enabled	Displays the health status of vCenter services
us	VMware, Inc.	4.0	Enabled	Displays the hardware status of hosts (CIM monitoring)
	Overland Storage...	4.3.92...	Enabled	SnapServer SAN VMware vSphere Plugin V4

Figure 1– SnapServer SAN VMware vSphere Plugin

10.20.16.34 VMware ESX, 4.0.0, 208167					
SnapServer SAN Datastores Refresh Destroy iSCSI Datastore Create New iSCSI Datastore...					
Identification	Device	Capacity	Free	State	Datastore Type
SNDataStore0	eu.0001b61b23ae0...	99.75 GB	59.20 ...	Unknown	VMFS

Figure 2 – vSphere interface with SnapServer SAN tab integrated

Hyper-V Specific Integration

- ✓ “Single-Click” Volume Creation—Create the target; Connect the iSCSI Initiator and Create the Windows Volume...all in one click of the mouse. Compare that to doing each step manually. (Figure 3)
- ✓ Automated Capacity Expansion—No more worries about running out of capacity or having to “guess” at how much capacity you “may” need in the future. Simply set the policy for automatically extending your Windows Volume and our intelligent expansion feature handles all those tricky diskpart commands for you. (Figure 4)
- ✓ Full management interface for the entire SnapServer SAN environment with full support for Microsoft MPIO VDS and VSS.
- ✓ Supports the Hyper-V VSS Writer directly for Replications and Backups.
- ✓ Enables Application Consistency utilizing VSS for Replications and Backups.
- ✓ Provides access for guest VM’s to iSCSI targets directly without having to expose to Hyper-V host.
- ✓ Active-Active Failover supported for clustered Hyper-V Servers.

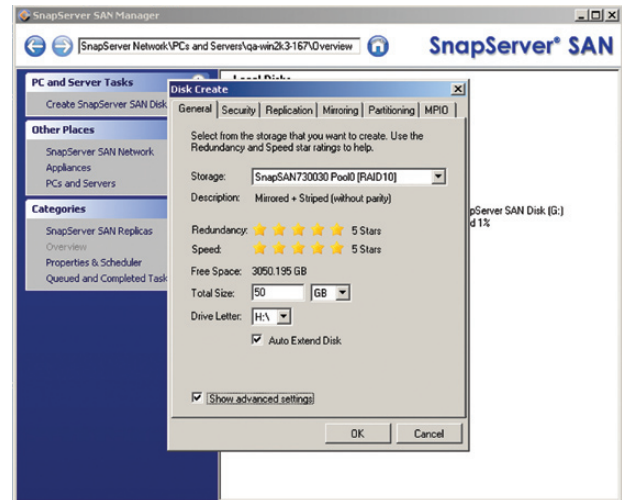


Figure 3 – SnapServer SAN Manager Windows application

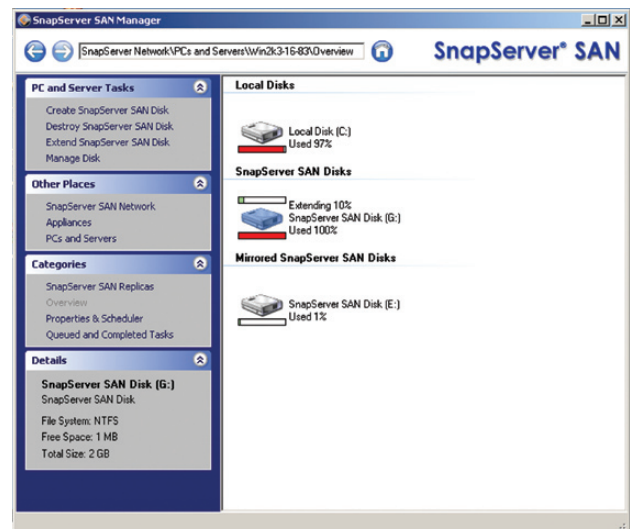


Figure 4 – SnapServer SAN Manager’s Automated Capacity Expansion for Windows in action

Hardware RAID Support
Capacity/S2000 Appliance
Capacity Expansion

S2000 2U iSCSI SAN Appliance
0, 1, 5, 6,10, 50, 60
12 drives SAS, SATA (intermix supported)
Up to seven 2U 12 drive E2000 enclosures
can be added

Microsoft Certifications

- ✓ Windows Server 2003
- ✓ Windows Server 2008
- ✓ Windows Server 2008 R2

VMware Certifications

- ✓ ESX 3.5 Update 5
- ✓ ESX 4.0 Update 1

About SnapServer SAN S2000

To learn more about the SnapServer SAN 2000 solution for iSCSI SAN environments and easily integrating storage into your VMware and Hyper-V deployments, visit: www.overlandstorage.com/SAN.



About Overland Storage

For over 29 years, Overland Storage has helped businesses effortlessly store, manage and protect their data. To learn more about Overland Storage’s complete line of NAS, SAN, VTL and Tape solutions, visit: www.overlandstorage.com.