



“ For over a decade Coolspirit have been supplying the UK’s top organisations with storage products and solutions so be assured we will meet your requirements head on.

It’s all about getting things right first time, quickly and simply! ”

Damon Robertson
Coolspirit Ltd

Our address

24 The Bridge Business Centre
Beresford Way
Chesterfield
S41 9FG

Get in touch

Call us on: 01246 454222
Email us: web@coolspirit.co.uk
Find us: [View location map](#)
Web: www.coolspirit.co.uk

Office hours

mon - thurs 8:30am - 5:30pm
fri 8:30am - 5pm
sat - sun Closed

“ Boost your storage buying power...
use ours! ”

Buy with confidence from
Coolspirit your authorised
Overland Partner



How to Simplify VMware Storage Management with SnapServer® SAN S2000

Why do you need it?

Virtualization is now a critical component within today's IT infrastructure.

- Will you have to learn an additional storage management tool?
- How complex is provisioning?
- What will it take to implement and manage important data protection features like mirroring and replication?

How we help...

The S2000's deep VMware integration enables rapid provisioning of Datastores and removes the complexities of ongoing management and data protection. Now, everyone can enjoy the benefits of a SAN without having deep storage administration or Fibre Channel networking experience.

- ✓ Designed from the ground up for VMware workloads
- ✓ Utilizes the vCenter console for creation, management, and data protection tasks
- ✓ No additional storage management tools or training required

Fully Integrated SnapServer SAN Wizards

Managing storage for your VMware environment can be complex. Multiple tools and lack of storage expertise can slow down virtual server deployments. But, with the SnapServer SAN vSphere Plugin, you easily manage your S2000 storage through the already familiar vCenter console, while managing ESX servers natively from within your VMware vCenter Server application.

(Figure 1)



Figure 1 – SnapServer SAN VMware vSphere Plugin

Effortless Management of VMware Storage Resources

Overland has done the heavy lifting for you to create a tightly integrated experience with vSphere—making the management of your S2000 SAN storage effortless. A Datastore creation wizard guides you through every aspect of creating and managing your storage. Say goodbye to multiple tools for provisioning and managing data protection features like mirroring. (Figure 2)

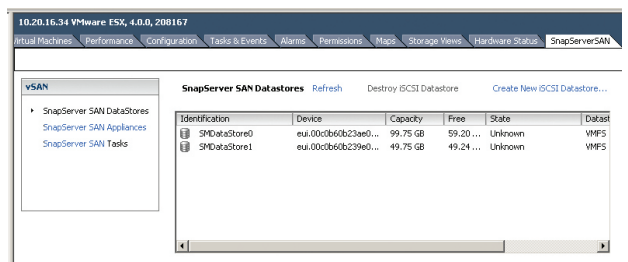


Figure 2 – vSphere interface with SnapServer SAN tab integrated

Beyond the simplified management and deep integration that the SnapServer SAN Manager for Windows application offers organizations, the S2000 management software also brings to light performance characterization analysis tools to help administrators fully understand their iSCSI SAN deployment. With the Statistics monitoring feature included as part of every S2000 installation, you are able to compare volume performance statistics on the SnapServer SAN appliance and see how heavily loaded each volume is allowing for preemptive changes to the way that data is distributed across their iSCSI SAN. (Figure 3)

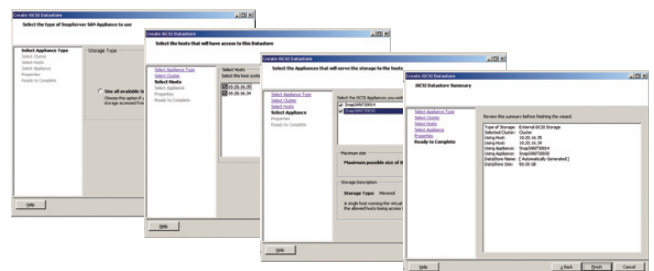


Figure 3 – SnapServer SAN Datastore Creation Wizard for VMware

High Availability for VMware

If your environment requires HA, the SnapServer SAN software can be configured to enable Active-Active Failover of ESX Datastores. With the single interface configuration for S2000 targets, VMware Datastores and VMware High Availability options (such as DRS, HA, VMotion, and Fault Tolerance) allows administrators to create a resource efficient and cost-effective HA solution that is simple to both manage and maintain. (Figure 4)

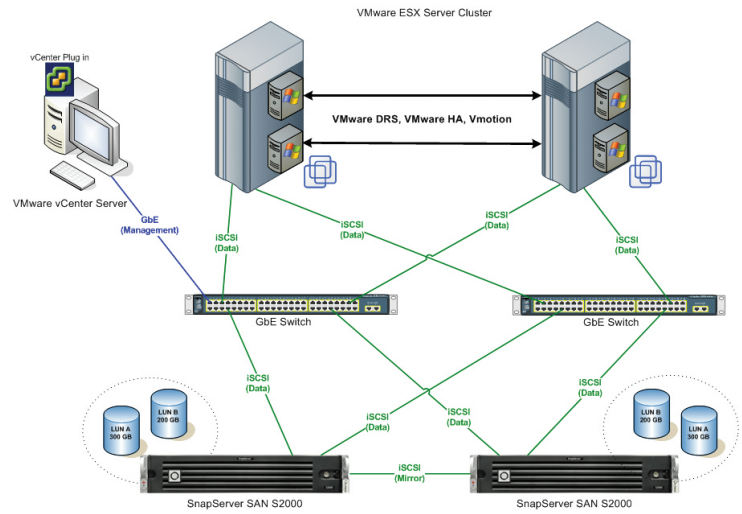


Figure 4 – Architectural Diagram of a VMware ESX Environment Configured with the SnapServer SAN S2000's for Active-Active Failover

Hardware
RAID Support
Capacity/S2000
Appliance
Capacity Expansion

S2000 2U iSCSI SAN Appliance
0, 1, 5, 6, 10, 50, 60
12 drives SAS, SATA (intermix supported)
Up to seven 2U 12 drive E2000 enclosures can be added

Microsoft Certifications

- ✓ Windows Server 2003
- ✓ Windows Server 2008
- ✓ Windows Server 2008 R2

VMware Certifications

- ✓ ESX 3.5 Update 5
- ✓ ESX 4.0 Update 1

About SnapServer SAN S2000

To learn more about the SnapServer SAN 2000 solution for iSCSI SAN environments and easily integrating storage into your VMware deployments, visit: www.overlandstorage.com/SAN.

About Overland Storage

For over 29 years, Overland Storage has helped businesses effortlessly store, manage and protect their data. To learn more about Overland Storage's complete line of NAS, SAN, VTL and Tape solutions, visit: www.overlandstorage.com.

