



“ For over a decade Coolspirit have been supplying the UK’s top organisations with storage products and solutions so be assured we will meet your requirements head on.

It’s all about getting things right first time, quickly and simply! ”

**Damon Robertson**  
Coolspirit Ltd

#### Our address

24 The Bridge Business Centre  
Beresford Way  
Chesterfield  
S41 9FG

#### Get in touch

Call us on: 01246 454222  
Email us: [web@coolspirit.co.uk](mailto:web@coolspirit.co.uk)  
Find us: [View location map](#)  
Web: [www.coolspirit.co.uk](http://www.coolspirit.co.uk)

#### Office hours

mon - thurs 8:30am - 5:30pm  
fri 8:30am - 5pm  
sat - sun Closed

“ Boost your storage buying power...  
use ours! ”

Buy with confidence from  
Coolspirit your authorised  
Overland Partner



## How to Implement High Availability with SnapServer® SAN S2000

### Why do you need it?

When companies add new storage to their data center, a key consideration is ensuring data availability.

- A server outage or massive loss of data can bring a company to its knees
- Availability of data and services in today's climate is often the difference between success and failure for a company

### How we help...

The S2000's high availability option enables Windows and VMware environments to prepare for the unexpected and provide the peace-of-mind that critical business assets are protected.

- ✓ Simple to deploy Active-Active failover solution
- ✓ Manage iSCSI SAN targets right inside native Microsoft Windows and VMware vSphere consoles
- ✓ Utilize one tool for storage management
- ✓ Intuitive wizards guide you through every aspect of creating and managing your storage
- ✓ Remove the complexities of creating iSCSI targets and managing HA deployments

### HA for Microsoft Windows Server

High Availability for Windows can be deployed in different ways depending on the preferred scenario or based on application needs. They may need to have more availability for storage or they may have the need to integrate with a Microsoft Cluster Server or even clustered Hyper-V Servers. To enhance the availability of the storage component administrators can mirror LUN's across two SnapServer SAN appliances. If one SnapServer SAN fails, everything keeps running on the host. If the failed SnapServer SAN appliance comes back online, the mirrors resynchronize and the redundancy is restored. There is no single point of failure for accessing the data in this solution. The Windows host itself is the only single point of failure. Multiple hosts can be configured to mirror their data across SnapServer SAN appliances. (Figure 1)

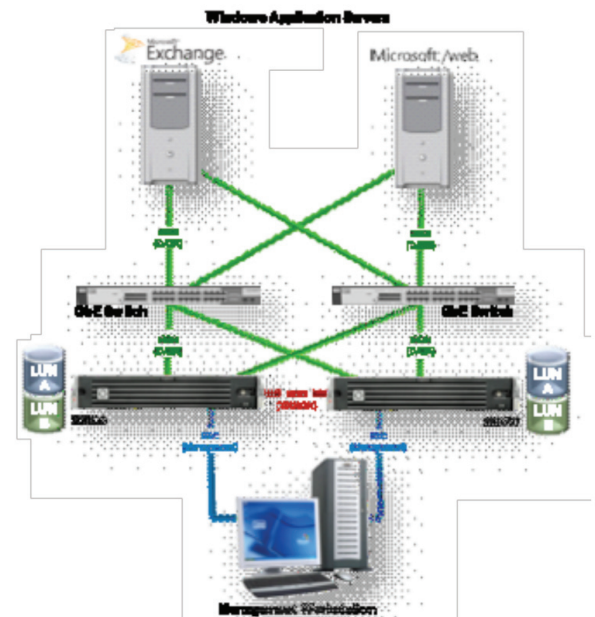


Figure 1 – SnapServer SAN S2000's configured for Active-Active Mirroring and Failover for Windows Servers

## HA for Microsoft Windows Server (cont.)

Integrating with Microsoft Cluster Server is a more common deployment in Windows environments. This scenario serves up a common storage pool for the cluster. Redundancy for this solution comes from the Microsoft Cluster Server with multiple hosts and redundant Ethernet ports for connectivity, RAID for disks, and redundant power and cooling on the SnapServer SAN appliance.

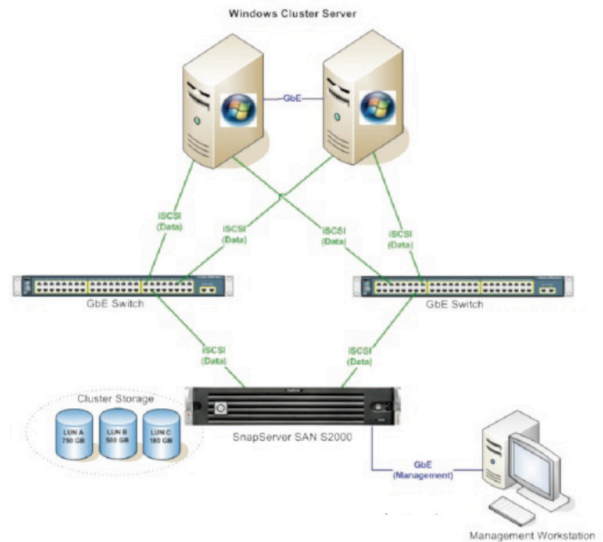


Figure 2 – SnapServer SAN for Microsoft Cluster Server (MCS)

## High Availability for VMware

The SnapServer SAN vSphere Plugin for VMware creates a new tab within vCenter allowing administrators to manage their ESX environment natively from within their VMware vCenter Server. The integrated SnapServer SAN software can be configured to enable Active-Active Failover for ESX Datastores. The single interface configuration for S2000 targets, VMware Datastores and VMware High Availability options such as DRS, HA, VMotion, and Fault Tolerance allows administrators to create a resource efficient and cost-effective high availability solution that is simple to manage and maintain.

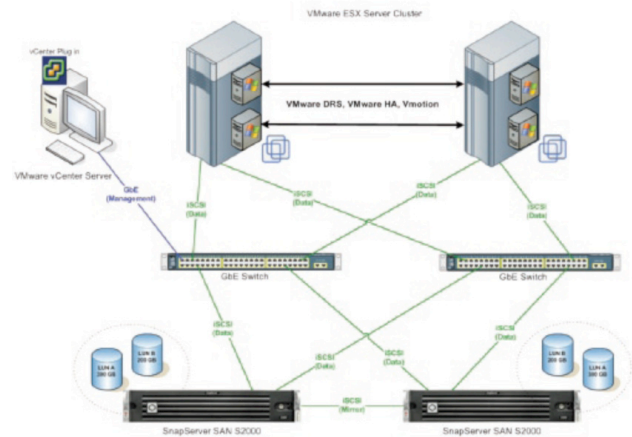


Figure 3

### Min. Solution Requirements

Qty: 2 S2000 2U iSCSI SAN Appliance  
 Qty: 2 SnapServer SAN Mirroring Licenses  
 RAID Support  
 Capacity/S2000 Appliance  
 Capacity Expansion

0, 1, 5, 6, 10, 50, 60  
 12 drives SAS, SATA (intermix supported)  
 Up to seven 2U 12 drive E2000 enclosures can be added

### Microsoft Certifications

- ✓ Windows Server 2003
- ✓ Windows Server 2008
- ✓ Windows Server 2008 R2

### VMware Certifications

- ✓ ESX 3.5 Update 5
- ✓ ESX 4.0 Update 1

## About SnapServer SAN S2000

To learn more about the SnapServer SAN 2000 solution for iSCSI SAN environments and easily integrating storage into your vmware and Hyper-V deployments, visit: [www.overlandstorage.com/SAN](http://www.overlandstorage.com/SAN).

## About Overland Storage

For over 29 years, Overland Storage has helped businesses effortlessly store, manage and protect their data. To learn more about Overland Storage's complete line of NAS, SAN, VTL and Tape solutions, visit: [www.overlandstorage.com](http://www.overlandstorage.com).

