



“Coolspirit’s impressive customer relationships and professional approach enable an excellent client experience.”

Martin Gibbons
Commvault

Our address

24 The Bridge Business Centre
Beresford Way
Chesterfield
S41 9FG

Get in touch

Call us on: 01246 454222
Email us: web@coolspirit.co.uk
Find us: [View location map](#)
Web: www.coolspirit.co.uk

Office hours

mon - thurs 8:30am - 5:30pm
fri 8:30am - 5pm
sat - sun Closed

“Boost your storage buying power...
use ours!”

Buy with confidence from
Coolspirit your authorised
Commvault Partner



Windows® Centric Singular Information Management for Microsoft® SharePoint 2010 and the Microsoft Enterprise

Top Reasons Why Customers Choose Microsoft and CommVault for SharePoint Products and Technologies:

1. Delivers a single Windows Centric solution enables Backup, Recovery, Active-Archiving, Records Management and Electronic Business Search (E-Discovery) at the content level.
2. "Release Independence" assists and accelerates upgrades to SharePoint 2007 and Office-14 by restoring granular items from previous versions of SharePoint.
3. 64-bit optimization enables superior performance of data movement, in particular for large SharePoint, Exchange, Microsoft SQL Server™ and Microsoft Office Communications Server (OCS) environments.
4. Integrated with SharePoint's Records Center. Policies can be set to send various data types based on content or classification into Records Manager.
5. Manage all of your data from any location, anywhere in the world with Internet connectivity.

Solution Overview

CommVault's Singular Information Management® solution ensures high-performance data management, active-archiving, backup/recovery, content indexing for **Enterprise Business Search, E-Discovery** in compliance, legal and regulatory environments. CommVault enhances the management of Microsoft® SharePoint® including utilizing the Microsoft FAST indexing engine to recall data based on content while leveraging the **64-bit optimized Windows Server™** environment that SharePoint resides in.

- **Enterprise wide Content Search** (using Microsoft's FAST indexing) for on-line, near-line and off-line data
- **"Release Independent"** Archive, Migration, Recovery and Replication
- **OnePass** backup & archive process
- **Archive** by document size, age and version management enabling faster, trimmer SharePoint databases while users can recall any and all versions of a document.
- Auto **Resume-Ability** for interrupted backups, restores, archives and recalls
- Seamless integration for **on-premise and hosted versions of SharePoint**
- Backup with Disaster Recovery and Application Integrated Granular Recovery
- CommVault's **SnapProtect™** feature is integrated and VSS integrated
- Seamless **Azure** and other cloud storage integration
- **De-Duplication**/Single Instance Storage (SIS, block & application integrated)
- **Client-side DeDuplication** (DeDup prior to moving data)
- Simultaneous Search across Exchange, SharePoint®, OCS & Windows
- Auto-Feed data to **SharePoint Records Center**
- Data Management for SharePoint and the **Windows Servers** that SharePoint reside in.

Via one browser based interface, Simpana® software enhances SharePoint with user and administrator ability to **microscopically manage data** while curtailing data growth and lowering storage costs.

CommVault's **"Release Independence"** can assist and accelerate your new install or upgrade to Office Server 2010 and or the various SharePoint 2010 versions (Enterprise, Standard and Foundation). CommVault software adds granular management (backup, archiving and restore) of various SharePoint items such as sites, documents, lists, .ASPX pages, templates, contacts, etc. The granular management allows you to manage all versions of various SharePoint items.

CommVault software's archiving enables a **faster, trimmer, better performing SharePoint server** by archiving items based on policy (size, age, version count) out of SharePoint but still enables users to easily recall archived data via search and/or through the use of Web Parts. Administrators can run native SQL utilities to reclaim disk space and database "white space".

CommVault Simpana software is optimized to take advantage of the **64-bit** computing environment and Volume Shadow Copy Services (VSS) and can also continuously replicate SharePoint via Continuous Data Replication (CDR).

CommVault software's **archiving** and compliance capabilities enable SharePoint data to be used within regulatory compliance guidelines. Data can be searched and recalled based on content, regardless of whether or not it is directly embedded in SharePoint, Exchange or within the Windows environment.

CommVault Simpana software is tightly integrated with **SharePoint's Records Center**, enabling CommVault software to be the foundation for Records management across the enterprise. Policies can be set across the heterogeneous enterprise (Exchange, Windows and heterogeneous File Systems too) for data automatically inputted into Records Manager.

CommVault software's foundation includes **DeDuplication/Single Instance Storage (SIS)** insuring less storage space is used for backup and archiving.

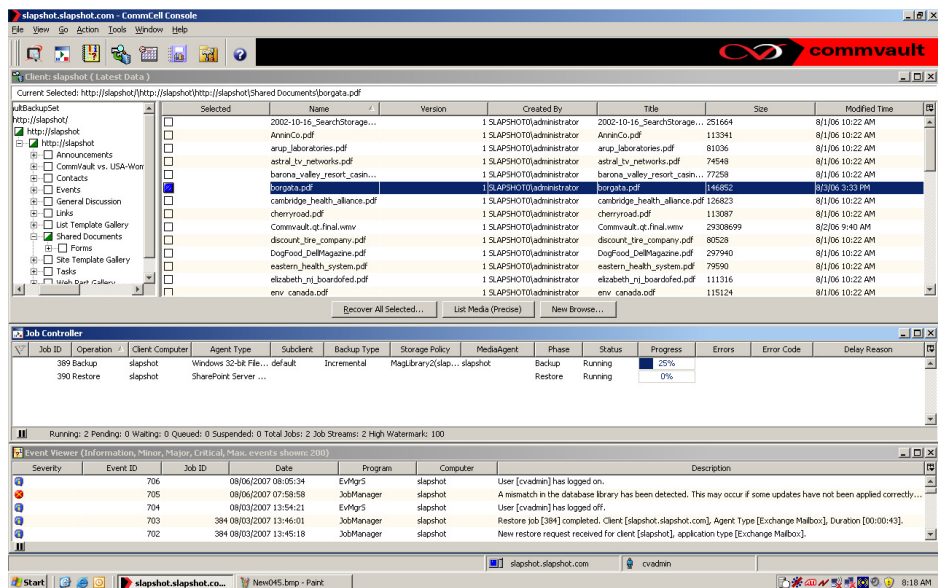


Figure 1: One unified solution for enterprise data management

Technical Pain Points Addressed

- **Backup, Recovery, Migration, Archiving, Data Mining, Content-Search** with quick recovery of granular items including mailboxes, messages, folders, contacts, calendar items and more or an entire SharePoint environment with its' Windows Server System™ environment.
- **DeDuplication/SIS** significantly reduces overall storage usage for backup and archive data including the ability to DeDup to Cloud (Azure) and tape.
- **Enterprise wide Content Search** with FAST for heterogeneous search
- **Active Directory & ADAM plug-in** enables management of objects and attributes, including the ability to recreate an object with Security Identifying Information (SID) for Windows Server environments.

SIMPANA®



- **Hyper-V supported** via CommVault virtualized server agents (1 agent to manage multiple VM's)
- **Continuous Data Replication** offered within the Simpana[®] suite
- **SnapProtect™ technology** enables multiple point-in-time snapshots with the ability to recover a server and the application quickly.
- **Worldwide management** via a browser based interface.
- **Multi-Lingual support**, including Outlook[®] plug-in for active archiving so users can remain in their native language
- **Simple off-site data management** with the ability to mix and match media types (Disk, Cloud, SAN, NAS, Tape, Magneto-Optical, DVD, etc.)
- **Reporting is simple** and can include custom reports that can be sent to mobile devices as well as Microsoft's Systems Center
- **Cross Server Restore capability** enables the movement of small and large data from one SharePoint environment to another.
- **Accelerate your upgrade** SharePoint 2010 knowing data can be retrieved from previous versions of SharePoint (back to SharePoint 2003)
- **CommVault's 64-bit optimization** ensures high performance and full advantage of the 64-bit server technology and 64-bit Windows Server software
- **Quota Management:** Users can more easily remain within their mailbox quota limits by using CommVault's mailbox management, and leverage less expensive secondary storage (Windows Storage Server for example) for older, less utilized E-Mail
- **CommVault Professional Services:** Broad worldwide coverage and support available for rapid installation that can be tailored to your environment
- **Multi-Lingual Support.**
- **Simple Off-Site data management** with the ability to mix and match media types (Disk, SAN, NAS, Tape, Magneto-Optical, DVD, etc.). Simple setup of D2D2T
- **Reporting is simple** and can include custom reports that can be sent to mobile devices
- **VSS integration for Exchange, SharePoint and SQL with "Generic Requestor" capability** enabling a single operation for hardware/provider based snapshots regardless of vendor.
- **Synthetic Full Backup offers the ability** to significantly reduce the number of full backups and media used for storage.
- **Remain within storage quota limits** with archiving to less expensive storage.
- **Web Part Integration**, for seamless recalls of documents from secondary and tertiary storage.
- **CommVault Professional Services:** Broad worldwide coverage and support available for rapid installation that can be tailored to your environment.

About CommVault

The CommVault[®] Simpana[®] Windows Centric Data Management solution enables you to use 1 SINGLE Data Management solution which will optimally perform the tasks of many other disparate solutions while leveraging storage devices such as disk and Azure. Simpana software is the result of extensive collaboration between Microsoft and CommVault.

Use Windows to easily manage SharePoint, Exchange, OCS, SQL, Active Directory, Windows and heterogeneous environments such as UNIX, Linux, NDMP, NetWare, GroupWise, Oracle, Sybase, DB2, Notes/Domino, Informix and MAC data.

CommVault is a Gold Certified partner that was recognized as a:

- 2006 Microsoft Innovation Technology Partner of the Year Finalist
- 2009 Advanced Infrastructure – Storage Solutions Partner of the Year Finalist
- 2010 Global ISV Infrastructure Partner of the Year Finalist

**SIMPANA**[®]