



“Coolspirit’s impressive customer relationships and professional approach enable an excellent client experience.”

Martin Gibbons
Commvault

Our address

24 The Bridge Business Centre
Beresford Way
Chesterfield
S41 9FG

Get in touch

Call us on: 01246 454222
Email us: web@coolspirit.co.uk
Find us: [View location map](#)
Web: www.coolspirit.co.uk

Office hours

mon - thurs 8:30am - 5:30pm
fri 8:30am - 5pm
sat - sun Closed

“Boost your storage buying power...
use ours!”

Buy with confidence from
Coolspirit your authorised
Commvault Partner



Windows® Centric Singular Information Management for Microsoft® SQL Server

Top Reasons Why Customers Choose Microsoft and CommVault® Software for SQL Server:

1. Deliver a single Windows Centric solution enabling active archiving, content search, classification, migration, backup, recovery, content management, DeDuplication and compliance for Exchange Server 2010, SharePoint 2010 and Office.
2. Assist and accelerate upgrades to Windows by restoring granular items from previous versions of Exchange dating back to Exchange 5.5.
3. Enable superior performance of data movement, particularly for large enterprise environments via 64-bit optimization.
4. Manage all Exchange and SharePoint data by “content” including automatic integration with Microsoft FAST indexing and Microsoft SharePoint Records Center.
5. Manage all data from any location, anywhere in the world with Internet connectivity.

Solution Overview

CommVault’s Singular Information Management® solution ensures a single piece of software enables high-performance data management, active-archiving, backup/recovery, DeDuplication and content indexing for Enterprise Business Search (**E-Discovery**) in compliance, legal and regulatory environments. CommVault software enhances SQL, SQL applications and the Windows environment SQL resides in.

CommVault® Software for SQL Server enhances:

- “**Release Independent**” to assist upgrades of Windows where SQL is running with Archive, Migration, Recovery and Replication
- **VSS integrated** for “snapshot” node management
- **OnePass** backup & archive process
- Seamless integration for **on-premise and hosted versions of SQL**
- **Backup with Disaster Recovery** with full, point-in-time and step restore capability
- CommVault **SnapProtect™** feature integrated and VSS integrated
- Seamless **Azure** and other cloud storage integration
- **De-Duplication/Single Instance Storage (SIS, block & application integrated)**
- Client side DeDuplication (DeDup prior to moving data)
- **Simultaneous Search** across Exchange, SharePoint®, OCS & Windows
- CommVault **archiving** integrated with SharePoint’s Records Center
- Auto-Feed data to **SharePoint Records Center**

CommVault Simpana software’s “**VSS Generic Requestor**” enables SQL administrators a simple ability to make VSS hardware shadow copies. A simple “check box” enables VSS snapshots and CommVault software will translate the VSS request into the hardware snapshot language that is so often different with each hardware vendor.

When SQL is hosting SharePoint, CommVault’s archiving enables a **faster, trimmer, better performing SharePoint server** by archiving items based on policy (size, age, version count) out of the SharePoint server but still enables users to easily recall archived data through the use of Web Parts. Administrators can run native SQL utilities to reclaim disk space and database “white space”.

CommVault Simpana software is optimized to take advantage of the **64-bit** computing environment and Volume Shadow Copy Services (VSS) and can also continuously replicate SharePoint via Continuous Data Replication (CDR).

Simpana software’s **archiving** and compliance capabilities enable SharePoint data to be used within regulatory compliance guidelines. Data can be searched and recalled based on content, regardless of whether or not it is directly embedded in SharePoint, Exchange or file systems.

CommVault Simpana software is tightly integrated with **SharePoint’s Records Center**, enabling CommVault software to be the foundation for Records management across the enterprise. Policies can be set across the heterogeneous enterprise (Exchange, Windows and heterogeneous File Systems too) for data automatically inputted into Records Manager.

CommVault software’s foundation includes **DeDuplication/Single Instance Storage (SIS)** insuring less storage space is used for backup and archiving.

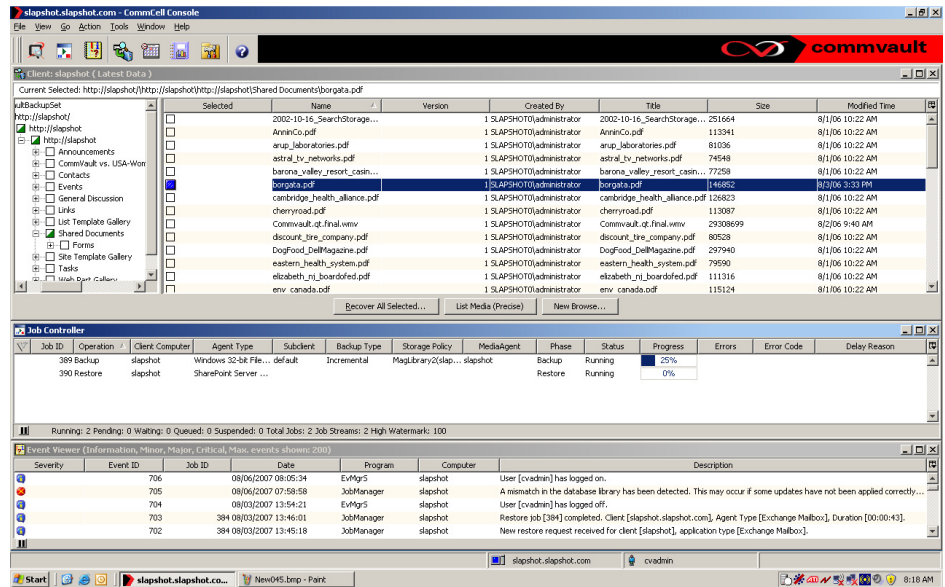


Figure 1: One unified solution for enterprise data management

Technical Pain Points Addressed

- **Backup, Recovery, Migration, Archiving, Data Mining, Content-Search** with quick recovery of granular items including mailboxes, messages, folders, contacts, calendar items and more or an entire Exchange Server with its' Windows Server System environment.
- **DeDuplication/SIS** significantly reduces overall storage usage for backup and archive data including the ability to DeDup to Cloud (Azure) and tape.
- **Enterprise wide Content Search** with FAST for heterogeneous search
- **Active Directory & ADAM plug-in** enables management of objects and attributes, including the ability to recreate an object with Security Identifying Information (SID) for Windows Server environments.
- **Hyper-V supported** via CommVault virtualized server agents (1 agent to manage multiple VM's)
- **Continuous Data Replication** offered within the Simpiana suite
- **The SnapProtect feature** enables multiple point-in-time snapshots with the ability to recover a server and the application quickly.
- **Worldwide management** via a browser based interface.
- **Multi-Lingual support**, including Outlook® plug-in for active archiving so users can remain in their native language
- **Simple off-site data management** with the ability to mix and match media types (Disk, Cloud, SAN, NAS, Tape, Magneto-Optical, DVD, etc.)
- **Reporting is simple** and can include custom reports that can be sent to mobile devices as well as Microsoft's Systems Center

SIMPANA®

- **PST Files** can be reduced or eliminated with CommVault software while **PST data** can be added for content and archive tracking
- **Accelerate your upgrade** to Exchange Server 2010 knowing data can be retrieved from
- Exchange 5.5, 2000 and Exchange Server 2003/2007 at the message, mailbox or Outlook extended information level
- **CommVault software's 64-bit optimization** ensures high performance and full advantage of the 64-bit server technology and 64-bit Windows Server software
- **Quota Management:** Users can more easily remain within their mailbox quota limits by using CommVault software's mailbox management, and leverage less expensive secondary storage (Windows Storage Server for example) for older, less utilized E-Mail
- **CommVault Professional Services:** Broad worldwide coverage and support available for rapid installation that can be tailored to your environment

About CommVault

The CommVault[®] Simpana[®] Windows Centric Data Management solution enables you to use 1 SINGLE Data Management solution which will optimally perform the tasks of many other disparate solutions while leveraging storage devices such as disk and Azure. Simpana software is the result of extensive collaboration between Microsoft and CommVault.

Use Windows to easily manage SharePoint, Exchange, OCS, SQL, Active Directory, Windows and heterogeneous environments such as UNIX, Linux, NDMP, NetWare, GroupWise, Oracle, Sybase, DB2, Notes/Domino, Informix and MAC data.

CommVault is a Gold Certified partner that was recognized as a:

- 2006 Microsoft Innovation Technology Partner of the Year Finalist
- 2009 Advanced Infrastructure – Storage Solutions Partner of the Year Finalist
- 2010 Global ISV Infrastructure Partner of the Year Finalist

SIMPANA[®]